

AbuTrader Expert advisor Guidebook

www.abumarket.net

www.abutalk.com

https://t.me/abutrader_robot

Dear Valued Clients,

We would like to extend our sincere gratitude for choosing our product. Your trust and support are greatly appreciated, and we are thrilled that our product has met your expectations.

At AbuTrader we strive to provide high-quality products that offer innovative solutions to meet your needs. Your purchase not only validates our hard work but also encourages us to continue designing and developing products that make a positive impact.

We are committed to your satisfaction, and our team is always here to assist you with any questions or concerns you may have. We hope our product enhances your daily life or business operations, and we look forward to serving you in the future.

Thank you again for choosing our product. We genuinely value your business and thank you for being a part of our journey.

Best regards,

Murodillo Eshquvvatov
AbuGroup

- * 😊 Instrument- Works any Major and Minor pairs (Gold risky)
- * 😊 Timeframe - auto select with PAIRs behavior (M30 , H1, H4,)
- * 😊 Minimum balance -400\$ deposit okay
- * 😊 Broker- Any Broker server okay with any suffix
- * 😊 Gain-Monthly gain around 5-10% without risk
- * 😊 News- Filter daily fx and FFA
- * 😊 Strategy Type-Ultra hard coded 16000lines of code all for deep money management, it comes with Neural prediction and Support and resistance Automated buttons, detailed manual panel and also indicator automation

Advantages of an Expert Advisor (AbuTrader)

Using Forex Expert Advisors (EAs) provides several advantages for traders in the dynamic world of foreign exchange. These intelligent software programs are designed to analyze market trends, make automated trading decisions, and execute trades on behalf of the trader. Here are some of the key advantages of using Forex Expert Advisors:

1. Increased Efficiency: EAs are programmed to constantly scan the market, analyze data, and identify trading opportunities based on predefined strategies. By automating the trading process, EAs allow traders to execute trades without emotional bias or manual errors. This improves efficiency and saves valuable time that can be utilized for other important tasks.

2. 24/7 Monitoring: The forex market operates 24 hours a day, five days a week. It is virtually impossible for a trader to stay constantly vigilant. EAs, on the other hand, can monitor the market non-stop, ensuring that no potential trading opportunities are missed. This round-the-clock monitoring enables traders to take advantage of different market sessions and seize opportunities promptly.

3. Accurate Analysis: Expert Advisors use advanced algorithms and technical indicators to analyze market data and identify patterns and trends. By eliminating human error and subjectivity, EAs provide more accurate and consistent analysis, leading to more informed trading decisions. They can quickly process vast amounts of data and react to market changes in real-time, improving the likelihood of capturing profitable trades.

4. Emotional Discipline: Emotional factors, such as fear, greed, or overconfidence, can have a significant impact on trading decisions and can lead to poor outcomes. EAs eliminate emotional biases in trading by strictly following predetermined rules and strategies. They execute trades based on logical analysis rather than being swayed by emotions, resulting in more disciplined and consistent trading.

5. Backtesting and Optimization: Before deploying an EA in live trading, traders can first backtest it using historical data. Backtesting allows traders to assess the performance of an EA under different market conditions and make necessary adjustments. Optimization enables traders to fine-tune parameters and improve the EA's performance, ensuring it is well-equipped to handle various market scenarios.

6. Diversification: EAs enable traders to diversify their trading portfolios by exploring multiple currency pairs simultaneously. They can handle different strategies or adapt to changing market conditions without increasing the manual workload. Through diversification, traders can potentially reduce risks associated with individual trades or specific currency pairs.

It is important to note, however, that while Forex Expert Advisors offer many advantages, they are not foolproof. Market conditions can change rapidly, and there is always a risk of losses. Therefore, it is crucial for traders to thoroughly understand and test any EA they use, and regularly monitor its performance to ensure its effectiveness.

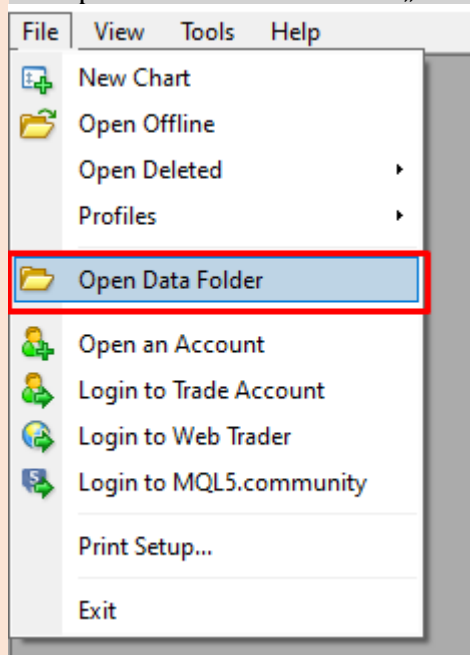
In summary, Forex Expert Advisors provide traders with increased efficiency, 24/7 monitoring, accurate analysis, emotional discipline, backtesting and optimization capabilities, and the potential for diversification. These advantages, when properly utilized,

can enhance trading strategies and potentially increase profitability in the ever-changing forex market.

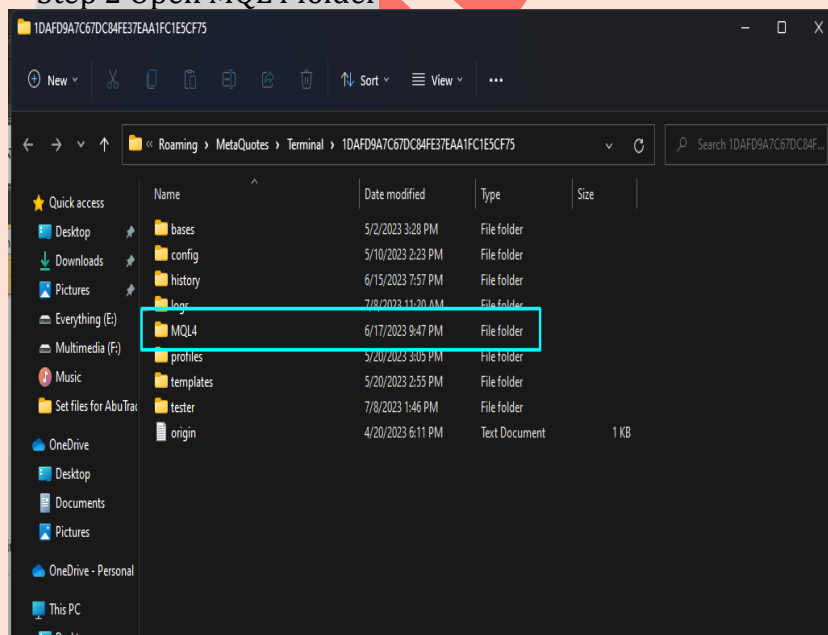
This expert Advisor has been created over 8 years of Market researches and have been made cool and realized at the beginning of 2023 year first of January as New Year gift to all

How to Install AbuTrader to Graph

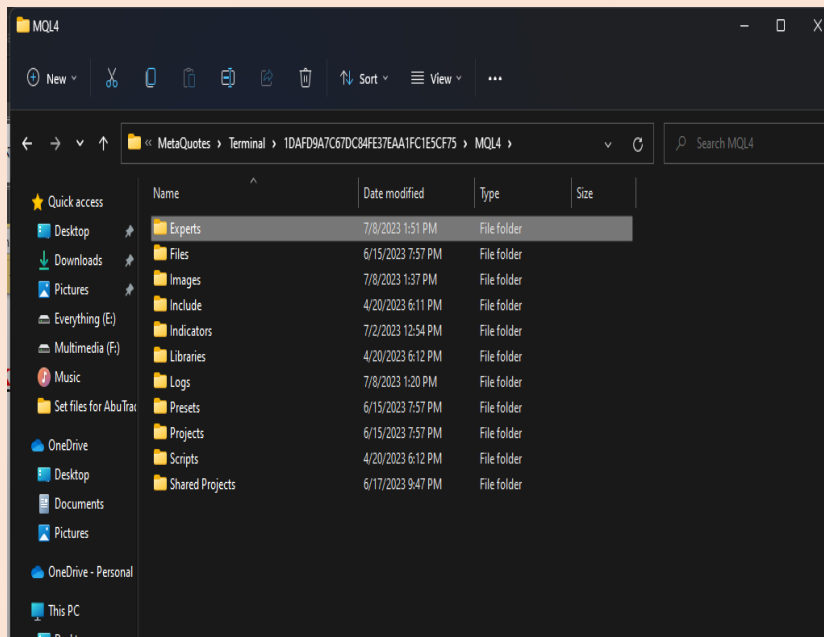
1-step Click files section and „Press Open Data Folder"



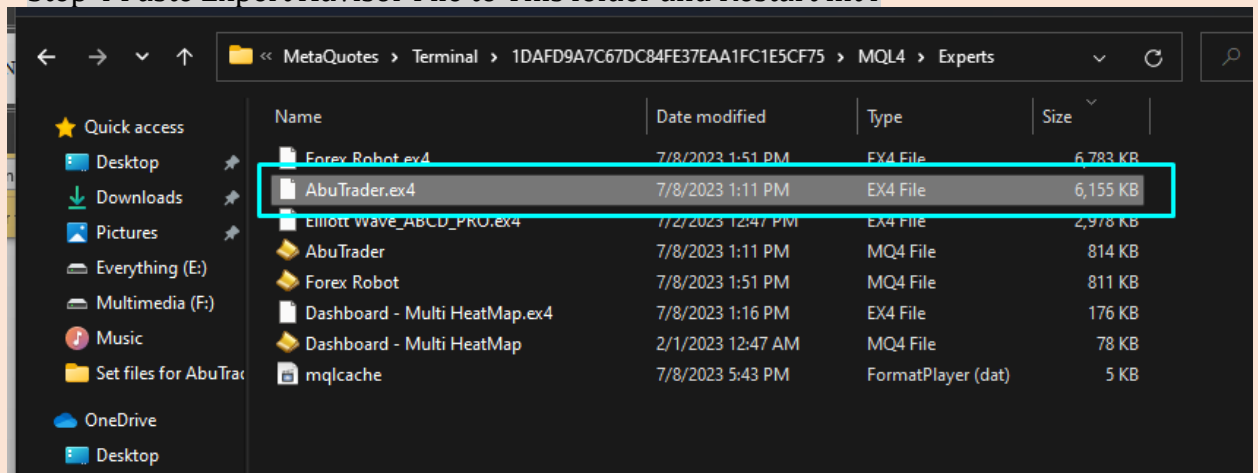
Step 2 Open MQL4 folder



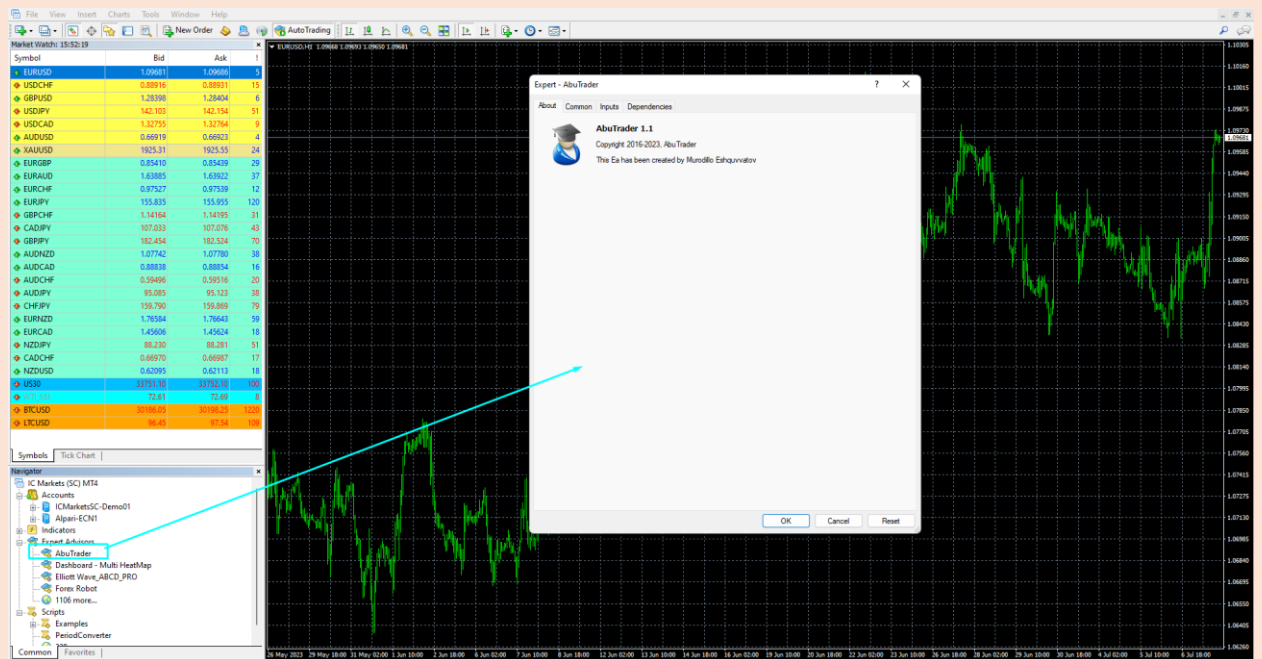
Step 3 Open Expert Folder



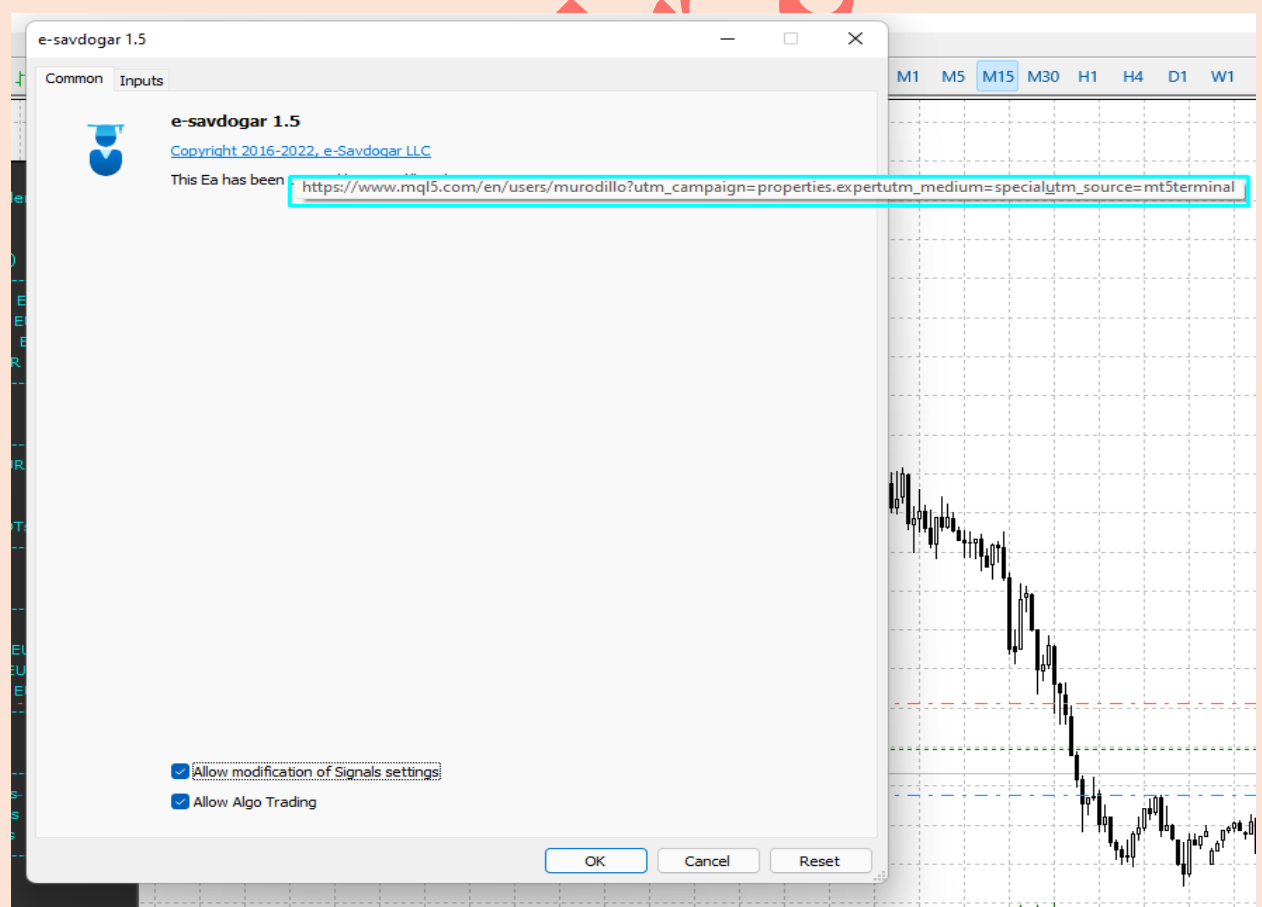
Step 4 Paste Expert Advisor File to This folder and Restart mt4



Step 5 Restart the mt4 then go expert section, and just Drag expert To specific Timeframe on set file Chart and Allow LIVE trading



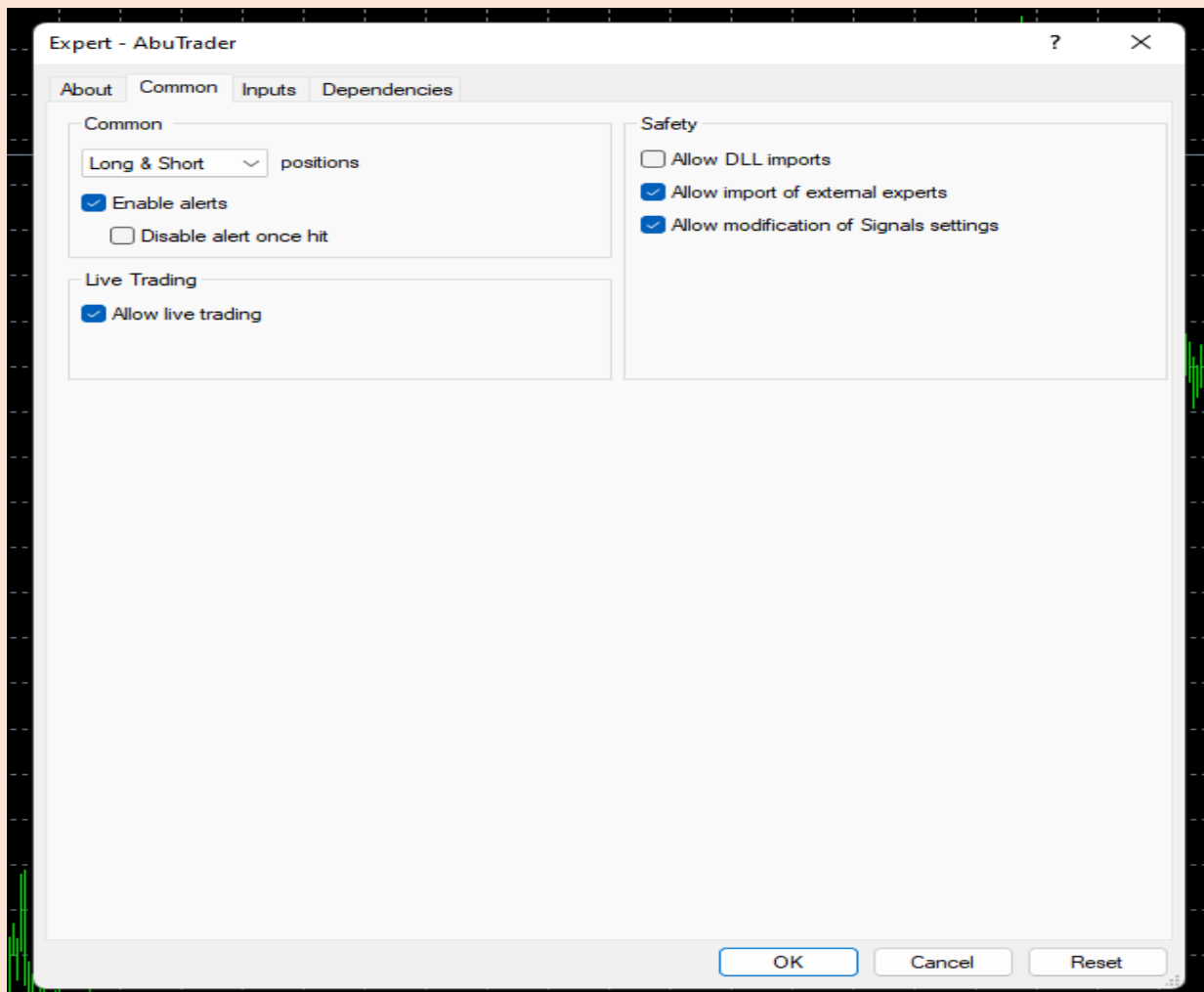
Step 6 When You Attached Expert Advisor to Graph chart this link helps you to launch to Murodil Eshkuvatov's traders Community (MQL5.com) profile, there you can find more information about his Signals new thing signals, and other Cool products!!



*1 Please Allow modification of Signals settings

*2 Enable Alerts= this function help expert advisor to Send Indicator notification while specific price has been reached

*3 Allow Live Trading= Allow to expert advisor to open live orders in your Brooker



What Is an Expert Advisor?

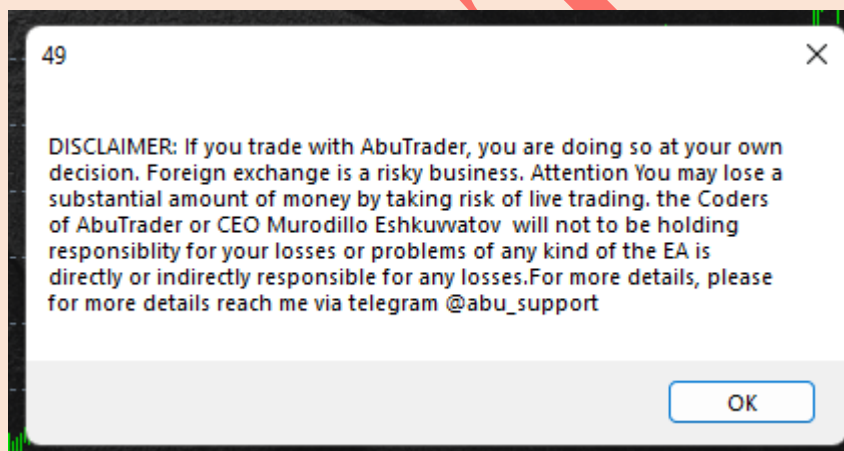
An expert advisor is a computer program that is designed to automate forex trading. There is a open somewhere in the world 24 hours a day, five days a week. You can use an expert advisor or a trading tool called a "forex robot" to carry out trades in your absence.

These tools enable you to make trades while you 're working, asleep, or doing other things. Like other artificial intelligence platforms, they have some benefits and issues that you should be aware of.



Basic appearance of AbuTrader expert Advisor above (Please be Sure to Expert Advisor smiling)

! Please Read and Follow **Disclaimer** if agree to using ea Say **OK...**



Let Talk About AbuTrader Functions

***Auto**: Forex automated Trading fans with amazing Risk management And Infographic panel wit all information

***Manual**: Traders who is luck of Money management and Risk ratio help them their Trading better

***Indicator**: Fans Especially Arrow basic of Moving Average, Bollinger Band, RSI, Stoch, Or Cool Fun of Patterns,

Inside bar, Morning star, Engulfing, Doji or many etc. Million ways this expert Advisor can be used

In below we will explain everything for you as we can
Beginning of AbuTrader 'Expert Advisor Functions

Roadmap- Our telegram channel for Guidebook to other projects

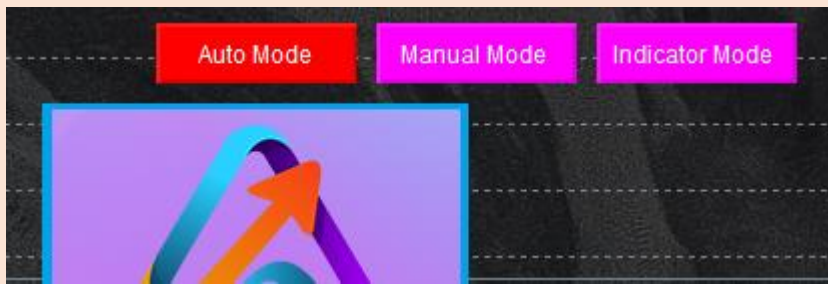
EcommerceSite- it is our site for digital and Physical products

OurAI - We created our AI site basic of 5 Trending AI combinations, (Azure, Chatgpt (6 model), Stable diffusion, Amazonpoly, GCP

Magic number- Order magic number for using Same chart at One Brooker for example EurUsd two charts in one m t4

PassValidation- attention this method always has to be FALSE, this function is for only quicker mql5 tester, not realted to you

Trading Mode- This mode is on graph Now; you can click buttons to activate another one



- Auto Mode- everything is automatic basic of Your entered properties
- Manual Trading- Only Pressing Buttons in chart all MM and RM is related to your choice
- Indicator Mode -please enter Indicator name below and Automate you Trading with your indicator

Theme- You can choice any of Theme as your desire

Strategy Type- There is three types of Strategy on us

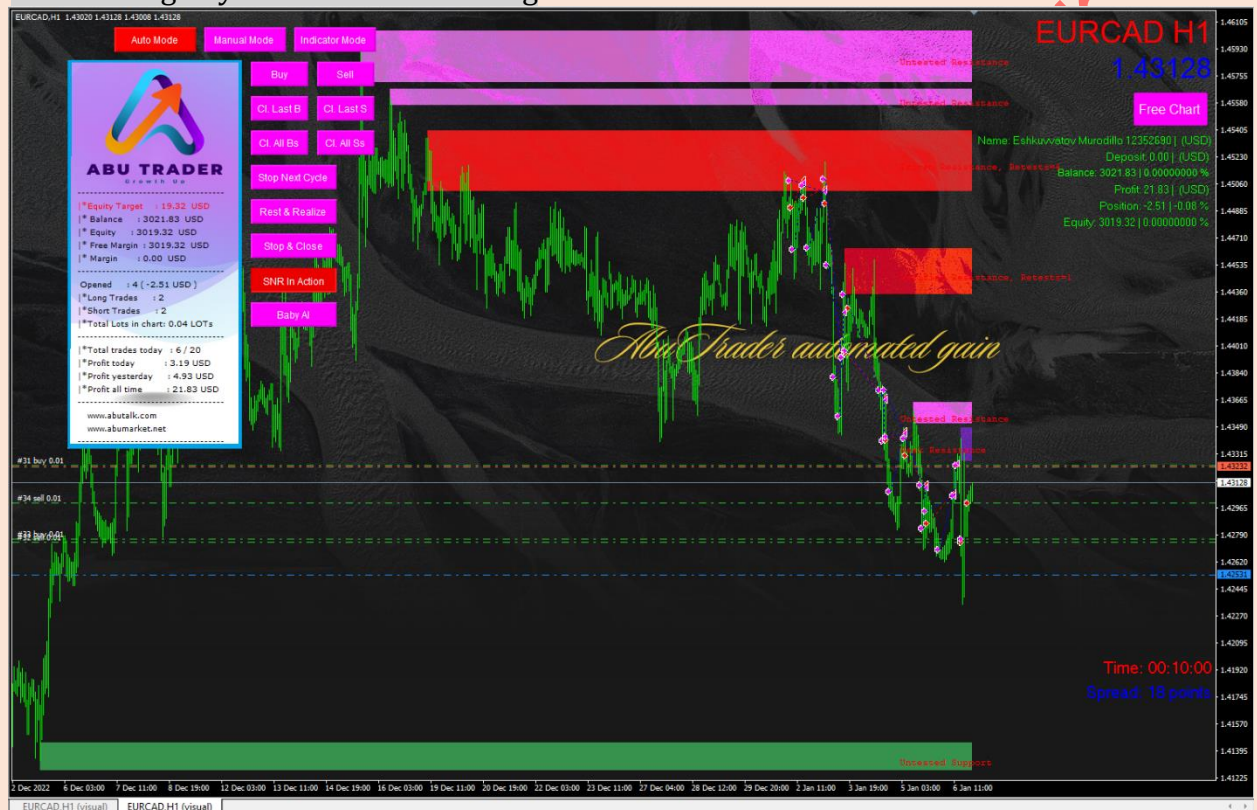
- Hedging- averaging method instant buy and sell
- Impulse catche- it gets impulse candle row and Size
- Price action- basic of RSI max over Long and Short Zone

Trend Follow- it is Impulse and price action direction on contrary (For Example RSI reached 80 and actual trader sells, but if you make this function True Then on 80 zone it buys and follows trend

Impulse Row and Impulse candle size- First Choice Impulse catcher on Strategy Type, then this function comes to action, what they do imagine 3 candle being Sell (Red) and each of them has 40+ pip size and there AbuTrader can sell, this is how works

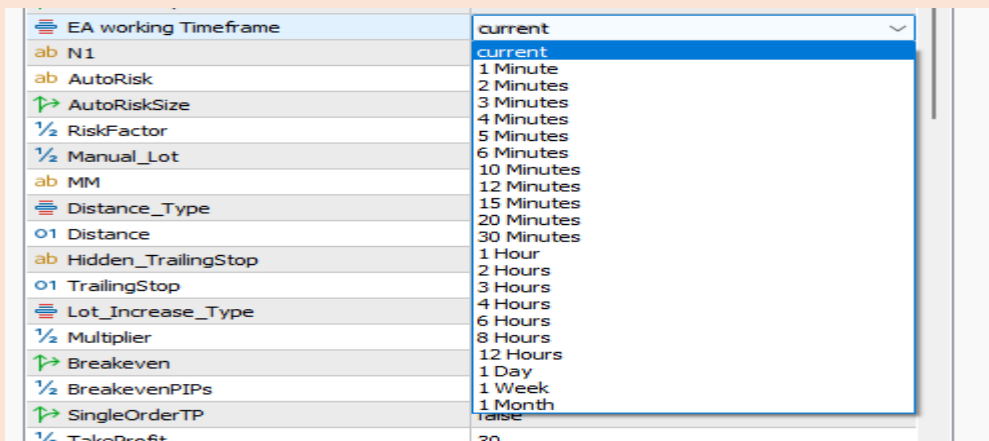
RSI Settings- For strategy 3 There you can change RSI properties for ea sell or buy, if you want SELL or BUY in max or min just make Trend Follow False, if you want to follow trend then make TREND follow TRUE

SNR_Graph- downloading Support and resistance graph to chart for better Manual and feedbacking to your Automatic trading



Each of Support and resistance will be show in Graph with it is Verified, untested and week Zone, Cool tool for Traders, you know better

EA working timeframe- Which timeframe it have to work, if used current will be used as No matter what timeframe you attach EA to graph all orders basic of This specific timeframe



Auto Risk Size= Basic of account balance: Risk Factor / 100000 * Account balance

For example: Risk Factor is 0.5 and Your balance 20000\$, then calculations; $0.5 / 100000 * 20000\$$ acc balance= 0.1 Lot EA will open orders

AbuTrader has three types of Risk- this mean for example you have 6000\$ balance and you high Risk so initial lot 0.02, because it is $3000\$ * 2$

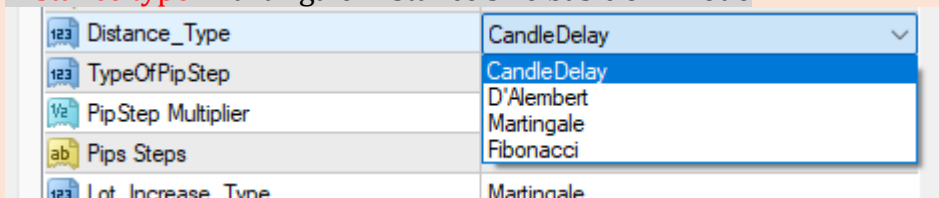
Low- Doubles 0.01 lot each 10000\$- for example you have 20 000\$ balance and you high Risk so initial lot 0.02, because it is $10\ 000\$ * 2$

Medium- Doubles 0.01 lot each 5000\$, for example you have 10 000\$ balance and you high Risk so initial lot 0.02, because it is $5000\$ * 2$

High- Doubles 0.01 lot each 3000\$ for example you have 6000\$ balance and you high Risk so initial lot 0.02, because it is $3000\$ * 2$

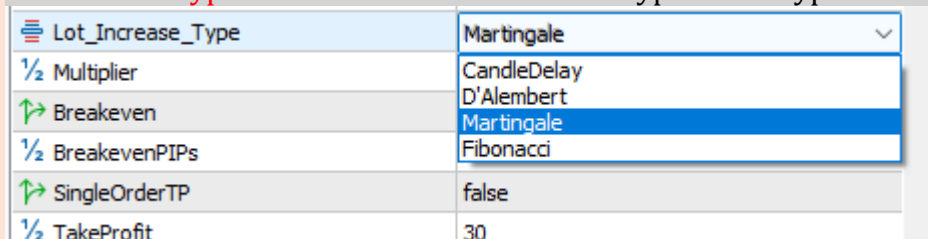
Manual Lot- When you made Auto Risk Size False , then it trades and will be used as entered lot: no matter How much Balance

Distance type: Martingale Distance size basic of 4 mode



- (Candle Delay)- Each order will be opened in new bar , this helps you market flexibility
- (D 'Alembert)- Volume will grow within a cycle 1/2/3/4/5 based on min_lot...
- (Martingale) - Volume will grow within a cycle 1/2/4/8/16 based on min_lot ...
- (Fibonacci) - Volume will grow within a cycle 1/1/2/3/5 based on min_lot ...

Lot increase type- This is the Martin increase type which type it has to....



- (Candle Delay)- Each Lot will be opened in new bar, this helps you market flexibility

- b) (D'Alembert)- Volume will grow within a cycle 1/2/3/4/5 based on min_lot...
- c) (Martingale) Volume will grow within a cycle 1/2/4/8/16 based on min_lot ...
- d) (Fibonacci) - Volume will grow within a cycle 1/1/2/3/5 based on min_lot ...

Pip Step Multiplier- this function multiplies your distance each new one for example you entered 20pips and pip Step multiplier 1.5 then next 30pips, then 45pips...

Pips STEP- it is for martingale function what is distance between orders, but attention it is not like grid, it is the basic of Market conditions, because if market increases, each candle delay will help you to Be with market

Hidden trailing Stop- Hiding trailing stop function, this Will be used for Single side or Total martingales orders at specific Trailing orders, if your positions meet News time This make you rich with Martin trailing

Multiplier- This is the function of martingale which multiplies lot size in new order (Common type)

Breakeven- This Makes all order reaches Zero then plus entered pips gain, for example 10 points plus to total orders lot (for example your total orders 2 lot plus 1 pips gain

Daily traget Profit- your daily gain in percentage and in Basic of Account currency for example dollar

Daily traget Lose- your daily lose in percentage and in Basic of Account currency for example dollar

Target percent- it is total ea made gain in initial deposit- for example your balance was 1000\$ and you entered there 30% ea made 300\$ and stops working, Leave and Forget function

First and Last order Closing- on martingale grid trading, your initial order and last opened will be closed together, for example grid going 0.01, 0.02, 0.04, 0.08... here last one 0.08 and 0.01 will be closed together

TP_Type- is the function: this helps trader Closing All positive orders at specific amount:

TP_Type	Balance %
1/2 Enter Percent Profit	Balance %
1/2 Amount In \$\$	Equity %
OneSide Profit	Margin %
1/2 OneSide Value	TP One Side %

- Balance%** - Closing all in Balance percent Profit:
- Equity %** - Closing All order at specific equity percent
- Margin%**- Closing all orders at specific Busy margin percent (Be careful to use)

One Side profit — this function helps closing Side (buy or sell) at amount of percent or Dollar , \$\$- Closing all orders at specific Equity- Balance — positive result- Dollar TP

OneSide Profit	TP One Side %
1/2 OneSide Value	TP One Side %
SL_Type	TP One Amount
	Balance %

TP one side %- if one ofSells or buys reaches specific value ofpercent profit, Orders will be closed

TP one side amount - if one ofSells or buys reaches specific value ofDollar profit, Orders will be closed

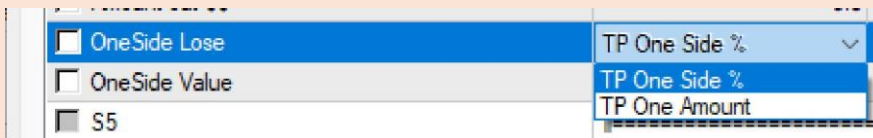
SL_Type- is the function : this helps trader Closing All Negative orders at specific amount:

SL_Type	Balance %
1/2 Enter Percent Lose	Balance %
1/2 Amount out \$\$	Equity %
OneSide Profit	Margin %
	TP One Side %

- Balance%** - Closing all in Balance percent Lose:
- Equity %** - Closing All order at specific equity percent Lose
- Margin%**- Closing all orders at specific Busy margin percent Lose (Be careful to use)

Amount out Function; Closing all orders at specific Equity- Balance — Negative result- Dollar Stop Lose

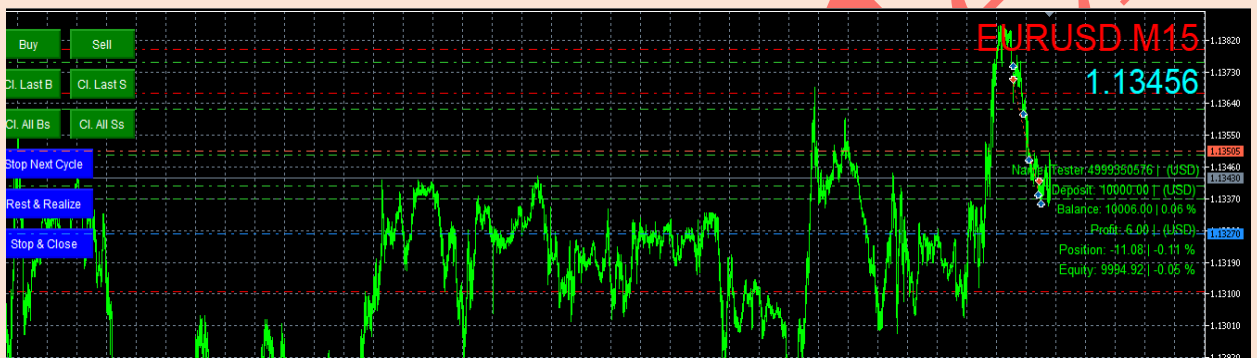
One Side Lose— this function helps closing Side (Buy or Sell) at amount ofpercent or Dollar Lose



TP one side %- if one of Sells or buys reaches specific value of percent Lose, Orders will be closed

TP one side amount - if one of Sells or buys reaches specific value of Dollar Lose, Orders will be closed

Single order Take profit — this function is really helpful to all, this means: each order have different take profit



Each order has it is different Take profit level, Not hidden, Hidden function for Trailing and martin

Single order Stop lose - this function is really helpful to all, this means: each order has different Stop Lose level each for example 100 pips Lose, even martingale one

Local time zone GMT offset- please enter your time zone (Do not you know?)

Go there <https://www.worldtimeserver.com>

Brokers MT4 's GMT offset : Enter brokers Gmt Press Ctrl+M and use this time MarketWatch:

Symbol	Bid	Ask	Daily...
AUDUSD	0.72013	0.72016	0.24%
EURUSD	1.13426	1.13427	0.14%
GBPUSD	1.36183	1.36188	0.18%
NZDUSD	0.67907	0.67911	0.33%
USDCAD	1.24808	1.24810	-0.23%
USDCHF	0.91601	0.91603	-0.14%
USDJPY	114.521	114.523	-0.08%
AUDCAD	0.89875	0.89883	-0.02%
AUDCHF	0.65963	0.65968	0.10%

After You have entered all Ea will Trades on specific Session time

Sessions: Which session Do you want to trade

If All sessions EA trade all sessions and does not filter Sessions

Session	All Sessions Trading
Extra_Functions	All Sessions Trading
DrawdownStop	Trading in Sydney...?
Maximum_orders	Trading in Tokyo...?
Max_spread	Trading in London...?
	Trading in NewYork...?

Drawdown Stop: This function Closes all Orders at specific percent Lose (Drawdown) enter percent 100% mean

NO

Direction type- Direction of orders (Long and Short)

- a) Buy and Sell allowed
- b) Only Buy Trades allowed
- c) Only sell Trades allowed

Maximum Orders : All orders counter, After reached , No new position

DrawdownStop	100
Maximum_orders	30

Show Bitmap — On and off Function: Each order or full orders after closing will be visible in chart with how much currency profit made , and total pips gain to account balance

5.37\$ made plus showing pips gain

Max Spread: When Spread Higher than Expected via manipulation, then use this filter

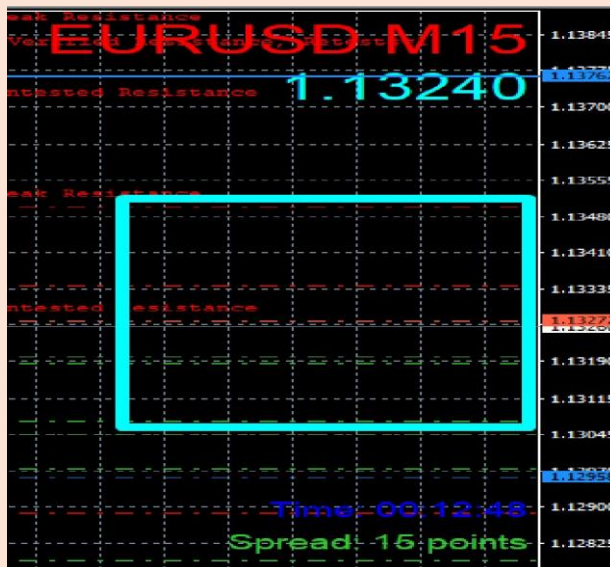
01 Max_spread	100
---------------	-----

Slippage: against the Manipulation: use Slippage filter to closing orders

<input checked="" type="checkbox"/> Slippage	2
--	---

Show Static info: info Panel of Right Side

<input checked="" type="checkbox"/> Show Stat Info	true	fa
--	------	----



Set Color symbol: Change color to Favourite

<input type="checkbox"/> Set Color Symbol	Chartreuse
---	------------



Indicator Automation:

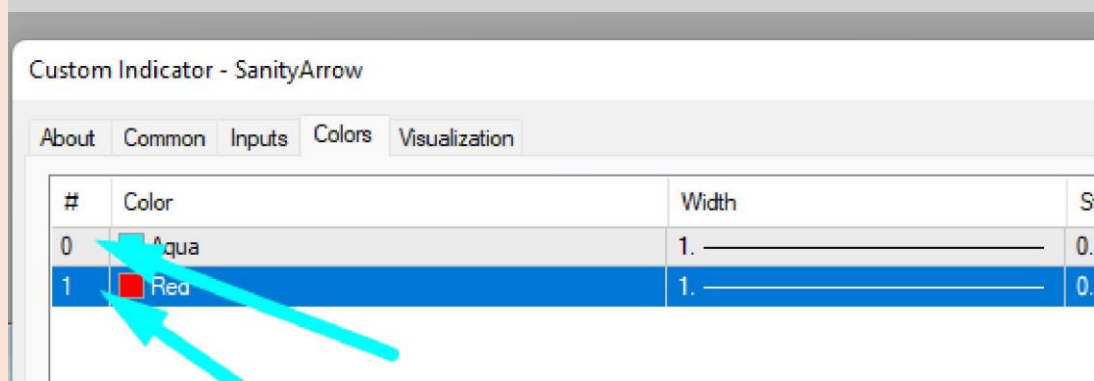
Indicator name: Enter your Indicator Name

Indicator should be in your mt4 's Indicator Folder and Exactly same name Should be entered:

C:\Users\Murodillo\AppData\Roaming\MetaQuotes\Terminal\A1660DA4CB596E740BE3B3233E577E1B\MQL5\Indicators

Buffers Of indicator: Please Proper indicator buffer

Mainly it will be like zero and one, Look below



Order after specific bar - When your indicator Arrow meet up , then order will be opened with delay of One bar (Candle)



Use martin Doubler : if your Stop Lose hits with 0.01 Lot , then your next arrow signal will be opened with 0.02

Multiplier: This is the value of next position how much Lot increasing if hits Stop lose

Indicator Take profit and Stop lose function in points, To Easy

Indicator order Stoploss in Points	500
Indicator order Takeprofit in Points	500

Traditional martingale for your arrow: With breakeven, above breakeven Function can be used for sure

Buttons Activation:



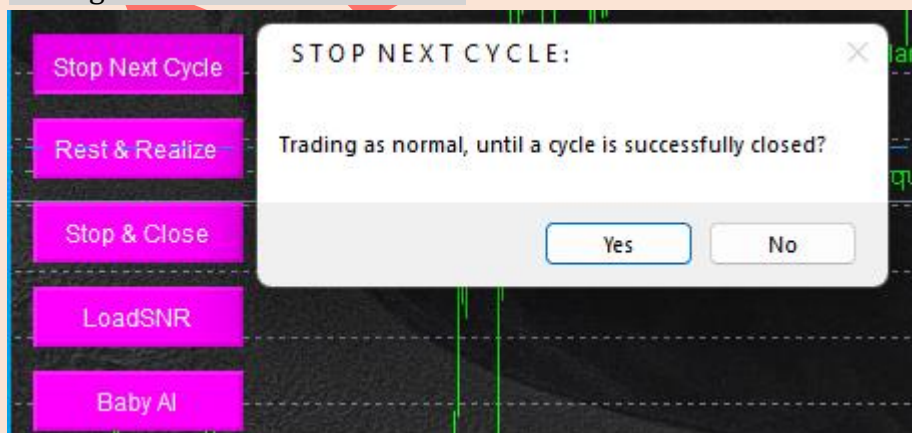
Buy- Instant sending Buy order to market /---+---/ **Sell** — instant sending Sell order to market

Cl. Last B — Closing last opened Buy//---+--- // **Cl. Last S**- Closing last opened Sell

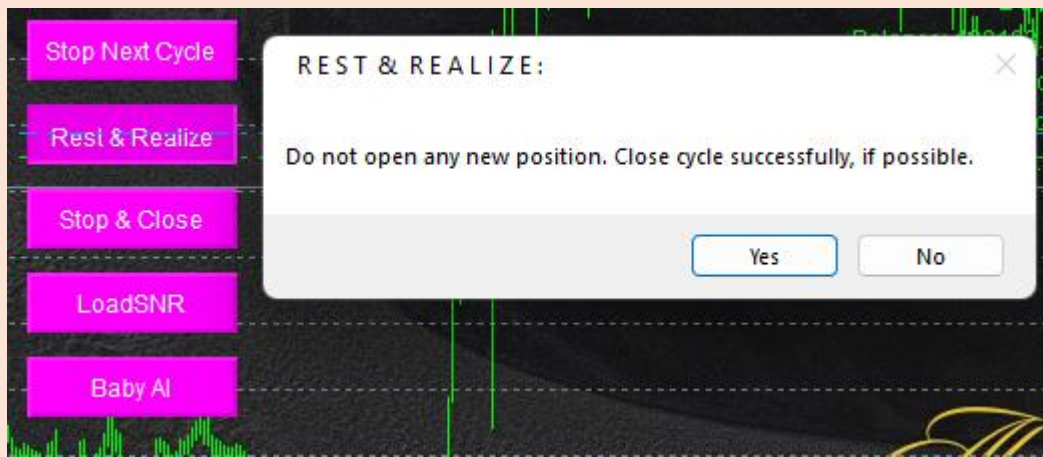
Cl. All B- closing All opened Buys

Cl. All S- Closing all opened Sells

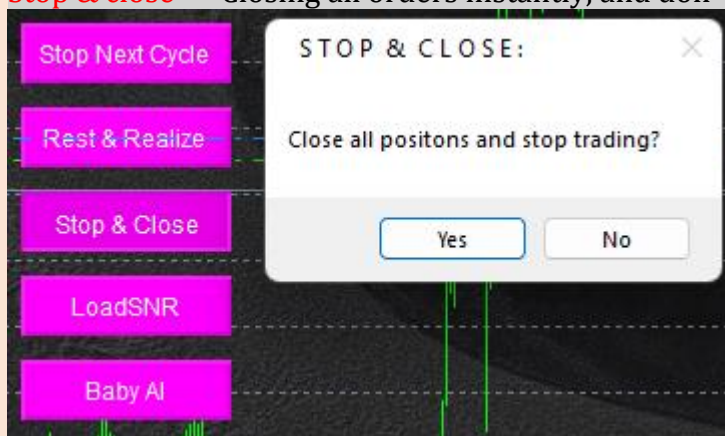
Stop Next cycle- After all positions meet take profit, no new position, till Successfully closing all works and sends order



Rest & Realize- Don 't open any new position and Close cycle if possible



Stop & close — Closing all orders instantly, and don 't open any new position!!



Load SNR- this button activates Support and Ressistance in graph



At AbuTrader we are committed to providing high-quality products/services that meet and exceed our customers' expectations. Your decision to invest in our [product/service] validates our efforts and motivates us to continually innovate and improve.

We truly value your satisfaction, and our dedicated team is here to support you every step of the way. If you have any questions, concerns, or need assistance, please do not hesitate to reach out to us. Your satisfaction is our top priority, and we are here to ensure your experience with our [product/service] is exceptional.

Once again, thank you for choosing [Company Name]. We appreciate your business and trust in our brand. We look forward to serving you again in the future.

Best regards,

Murodillo Eshquvvatov

AbuGroup

www.abumarket.net

www.abutalk.com

https://t.me/abutrader_robot